

FPB Floricode Test Centre 1.0/1.0

Functional Description

A Test Centre guide

Bestandsnaam : LZa14078 - Floricode Test Centre.docx
Bestandsnummer : LZa14078
Datum laatste wijziging : 10 November 2017
Documentversie/release : 1.0/1.0
Documentstatus : Concept



Copyright

© Floricode, 2017

All Rights reserved. No part of this edition may be multiplied, stored in electronic database or published in any form or way, electronically, mechanically, by photocopy recordings or any other way, without prior written permission from „Stichting Floricode“. For obtaining permission, contact Stichting Floricode at P.O. Box 115, 2370 AC Roelofarendsveen.

Disclaimer

Floricode pays utmost attention to the information which it distributes. However, it cannot vouch for correctness, completeness and timeliness of the information. This also applies to the content or reliability of (references to) other web sites and hyperlinks. No right whatsoever can be derived from the information and Floricode is not liable for any damage or loss, direct or indirect, and of whatever kind, resulting from or in any way connected with use of the information or (temporary) inaccessibility of the web sites.

Floricode reserves all rights pertaining to the information on its web sites. No publication or modification of the information is allowed without prior written permission from Floricode.

Inhoudsopgave

Wijzigingsblad	4
1. Introduction	5
2. Glossary	6
3. Getting started	7
4. Test Centre overview	8
4.1 GUI	8
4.1.1 Home	8
4.1.2 Select a test scenario	9
4.1.3 Start a test scenario	10
4.1.4 Test scenario	11
4.1.4.1 Start	11
4.1.4.2 Executing	12
4.1.4.3 Complete	13
4.2 ER Diagram (functional)	14
4.3 Activity diagram	15
4.3.1 Testing	15
5. Testing your application	17
6. Review previous tests	19
7. Request support	19

Wijzigingsblad

Versie	Auteur	Wijzigingen
1.00	Leo Zandvliet	Initial version

1. Introduction

The Floricode Test Centre is used for testing numerous digital messages. The main focus of the tests will be checking the technical aspect of the messages: a correct syntax, all required elements are mentioned, the correct format of the information. Most test scenarios also check important parts of the contents of the message and all scenarios will check on the applicable business rules.

This guide will teach a tester (a user of the Test Centre) how to work with the application "Test Centre".

2. Glossary

Term	Description
Test group	A group of closely related test scenarios. These are displayed as tree in the main menu "Select a test".
Test scenario	A group of individual tests that will verify the message handling of a specific process and conditions. A test scenario can also consist of only one test.
Test / test step	A check of one in- or outbound message from or to the Floricode Test Centre. A test step is always part of a test scenario.
Statement of Conformity	A statement given to a tester and his application meaning that a particular test scenario has been passed successfully.
Tester	An user of the Test Centre.
Client interface	The 'client side' implementation of the application of the tester.
Server interface	The 'server side' implementation of the application of the tester.

3. Getting started


One of the preconditions for testing in the Test Centre is having an account. Mostly an account is given to you when subscribing to one or more message standards. If you are a subscriber of such, and are sure you don't have an account yet, please contact us.

We expect you to have knowledge of the technical language and transport mechanics of the messages to be tested in our Test Centre. That means for example you have knowledge of SOAP, HTTP and XML. Or SMTP and EDIFact.

Also it's important you have developed an application or webservice already that can be tested with or against our Test Centre, or that you have a tool to test with and helps you understand the mechanics of our implementation of the messages.

If it's possible, please do syntax checking of messages before starting tests in our Test Centre. That's much better for the learning process and faster than letting our Test Centre do that for you.

Login to the Test Centre before continue reading!



Welcome to the Floricode Test Centre

Please enter your credentials below.

Username:

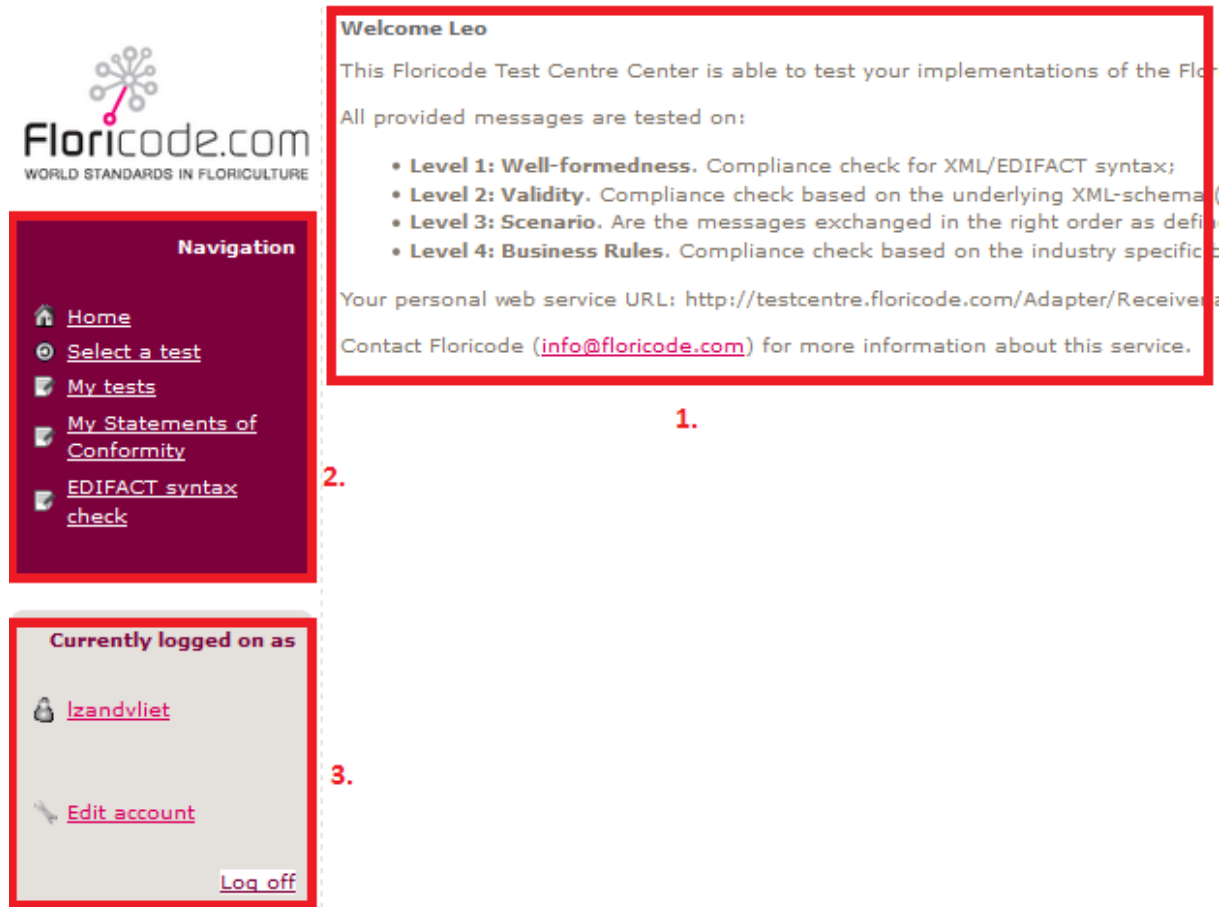
Password:

[Forgot your password?](#)

4. Test Centre overview

4.1 GUI

4.1.1 Home



1. Content pane.
Here you'll find the information you requested through one of the items in the navigation or account panes.
2. Navigation pane.
Also 'main menu'.
3. Account pane.

4.1.2 Select a test scenario

Test groups

Below are the available test groups listed. Please select a group to view the test scenarios within.

The screenshot shows the interface for selecting a test scenario. It is divided into three numbered sections:

- 1. Overview of the available test groups:** A tree view under 'Testscripts' with 'Communities' selected. Sub-items include 'Logistiek2013', 'CC VMP', 'Server Interface', 'Client Interface', 'version 0.7 (Feb 21th, 2013)', 'EOS: Floricode Order Systematiek', 'CLIENT Export', 'LABEL', 'FloraHolland', 'ETO 2.2', 'Floricode Generiek', and 'Edibulb'. 'Minimum implementation' is highlighted in bold.
- 2. Information about the Statement of Conformity:** A form titled 'Minimum implementation: Minimum implementation'. It includes a checked checkbox 'Yes, send me a Statement of Conformity when I completed all test scenarios succesfully.', a text box for 'Name of my application', and another for 'Version of my application'. A 'Start testing for a Statement of Conformity' button is at the bottom.
- 3. Overview of test scenarios in the selected group:** A table with columns: Name, Description, Status (for Statement of Conformity), and Start. Two scenarios are listed: '01: Get (minimum) supply (all) from a virtual market place' and '02: Get (minimum) supply (all and then by ID) from a virtual market place'. Both have a green arrow in the 'Start' column.

1. Overview of the available test groups
The bold text indicates the current selected test group.
2. If available: Information about the Statement of Conformity you are testing for.
Uncheck the box if it's not wanted to start testing for a Statement.
3. The overview of test scenarios in the selected group.
These mostly have to be successfully passed when a Statement of Conformity is available.

4.1.3 Start a test scenario

Start test

Test scenario	Versturen Levering op basis van opgehaalde Koopbrief	
Description	Haal eerst een Koopbrief op middels een ID, en stuur vervolgens zelf een BVO op basis van deze Koopt	
Transport protocol for message exchange	Webservice. Use this personal url to send the messages from you application to the Floricode Test Centre: http://testcentre.floricode.com/Adapter/Receiver.ashx?userID=xxxxx-xxxxx-xxxxx-xxxxx-xxxxx	
Comment on this test	<div style="border: 1px solid black; height: 50px;"></div>	
Scenario variables:	The variables below will be used to validate your messages and/or send messages towards you! Please fill them with data you (can) use in your application.	
Buyer Name	<input type="text" value="Example Buyer"/>	<i>The name of the Buyer</i>
Supplier Name	<input type="text" value="Example Supplier"/>	<i>The name of the Supplier should be you</i>
Agent GLN	<input type="text" value="8719604161674"/>	<i>The GLN Company Code of the Agent</i>
Supplier GLN	<input type="text" value="8719604190216"/>	<i>The GLN Company Code of the Supplier should be you</i>
Buyer GLN	<input type="text" value="8719604006937"/>	<i>The GLN Company Code of the Buyer</i>
	<input type="button" value="Start the test >"/>	

When starting a test scenario, you'll see an page like the example above. This page contains very important information, so please read everything.

Some extra information per label:

- Transport protocol for message exchange
In case of webservises, use the given personal url in you application to send the messages to the Test centre. No further authentication is needed. In production environment, authentication is most likely required, but in the Test Centre it's handled by personalized urls.
- Comment on this test
This is mostly for your own reference only. The Test Centre will save this for your reference only.
- Scenario variables
The variables must be filled and personalized by you for this scenario specific test. The Test Centre will validate your message against these variables and/of will use these in the messages send to your application. Most likely these variables can't be kept empty but this differs per scenario. E.q.: If you'll get a message with a BuyerParty without identifier, it's almost certain you didn't specify the BuyerParty GLN here.

4.1.4 Test scenario

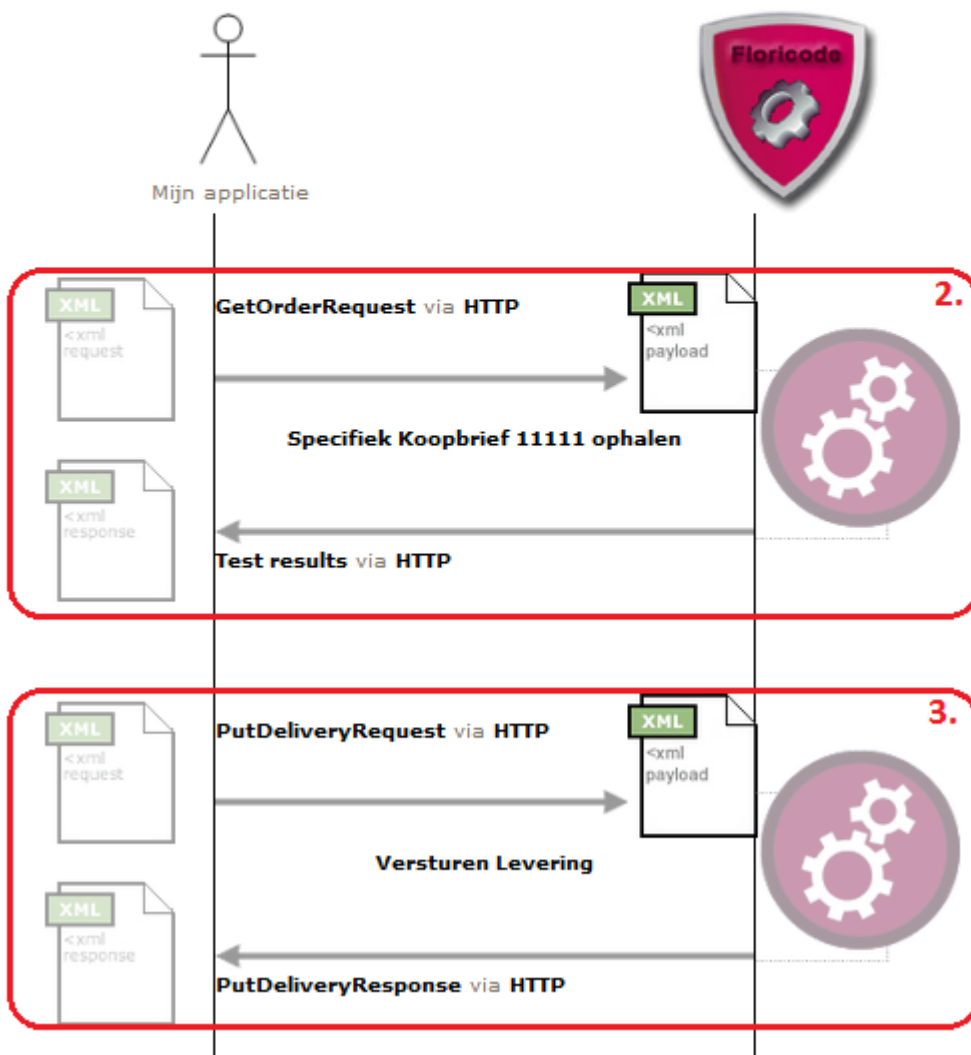
This paragraph is split into several sub paragraphs indicating several, chronologically ordered, states of the scenario.

4.1.4.1 Start

Mijn Test 1.

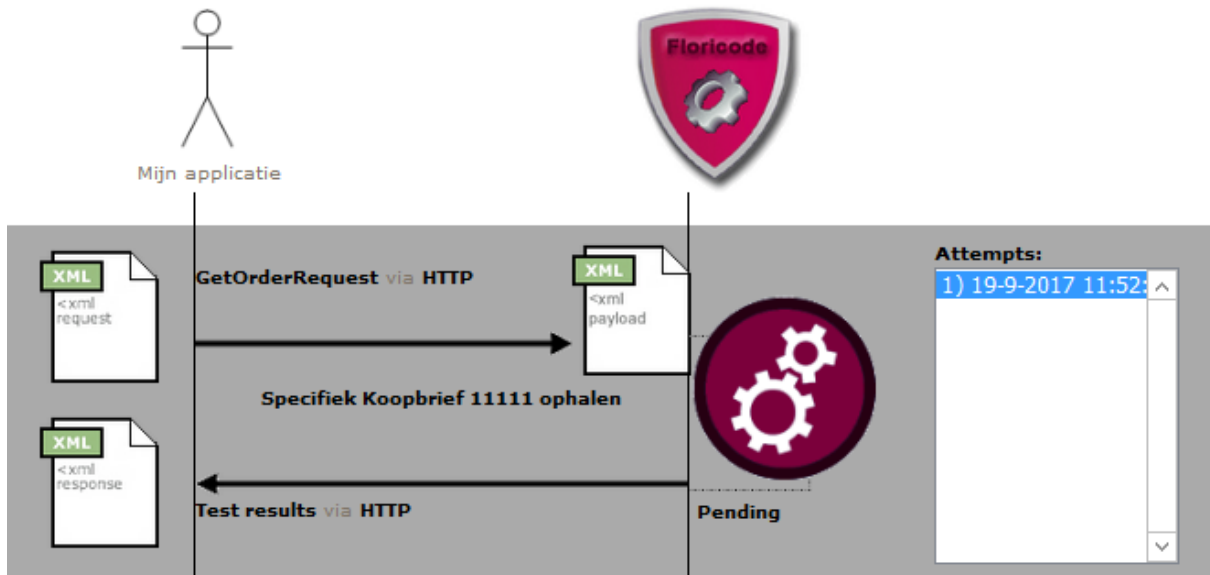
Below you'll find a description of this test scenario, and below that a visualization of the test scenario. Please send your message to the Test Centre if you have to initiate the message transaction. This page will refresh continuous, please be patient!
 When asking for support on this scenario, please e-mail the url of the current page.

Scenario	Versturen Levering op basis van opgehaalde Koopbrief
Scenario group	Edibulb - Release 2015 - Rol van een ketenpartij - Bemiddeld
Description	Haal eerst een Koopbrief op middels een ID, en stuur vervolgens
Your comment	



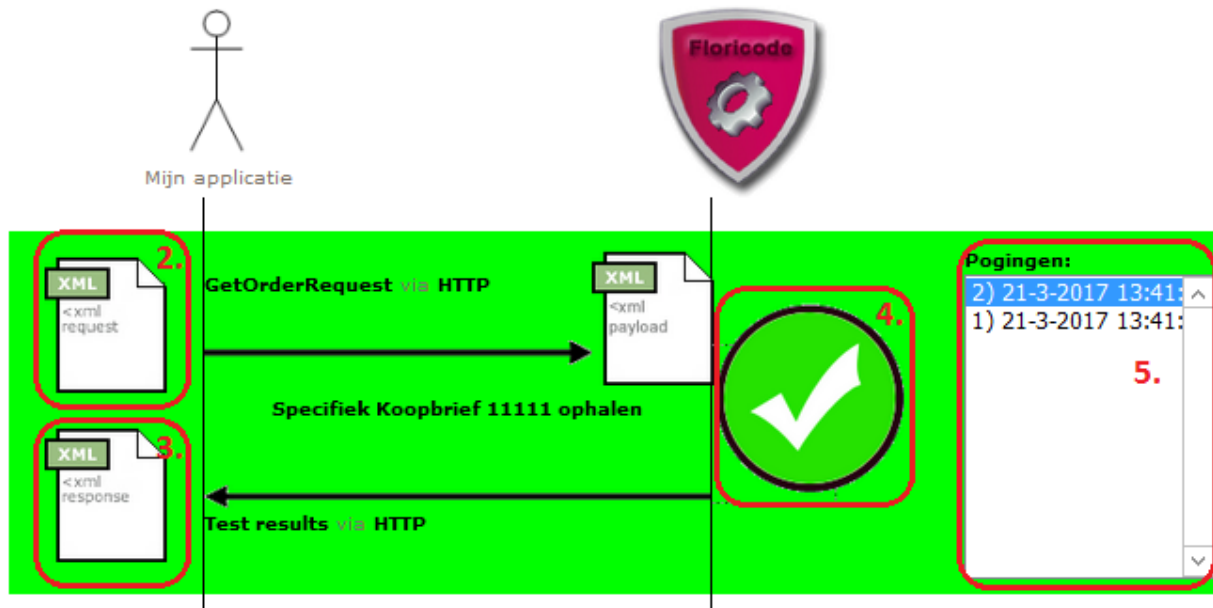
1. Description of the current scenario
2. The first step of this scenario. Each block of an inbound and outbound message define a step.
3. The second step of this scenario. This is optional, there can be an unlimited number of steps.

4.1.4.2 Executing



A message is being send from/to the Test Centre and the results are being processed. This can be identified by the two gears and the label “pending” below them. A ‘test attempt’ is added to the list on the right. The Test Centre always validates the message that’s being sent to it, this can be the initial request but also the response of a http transaction.

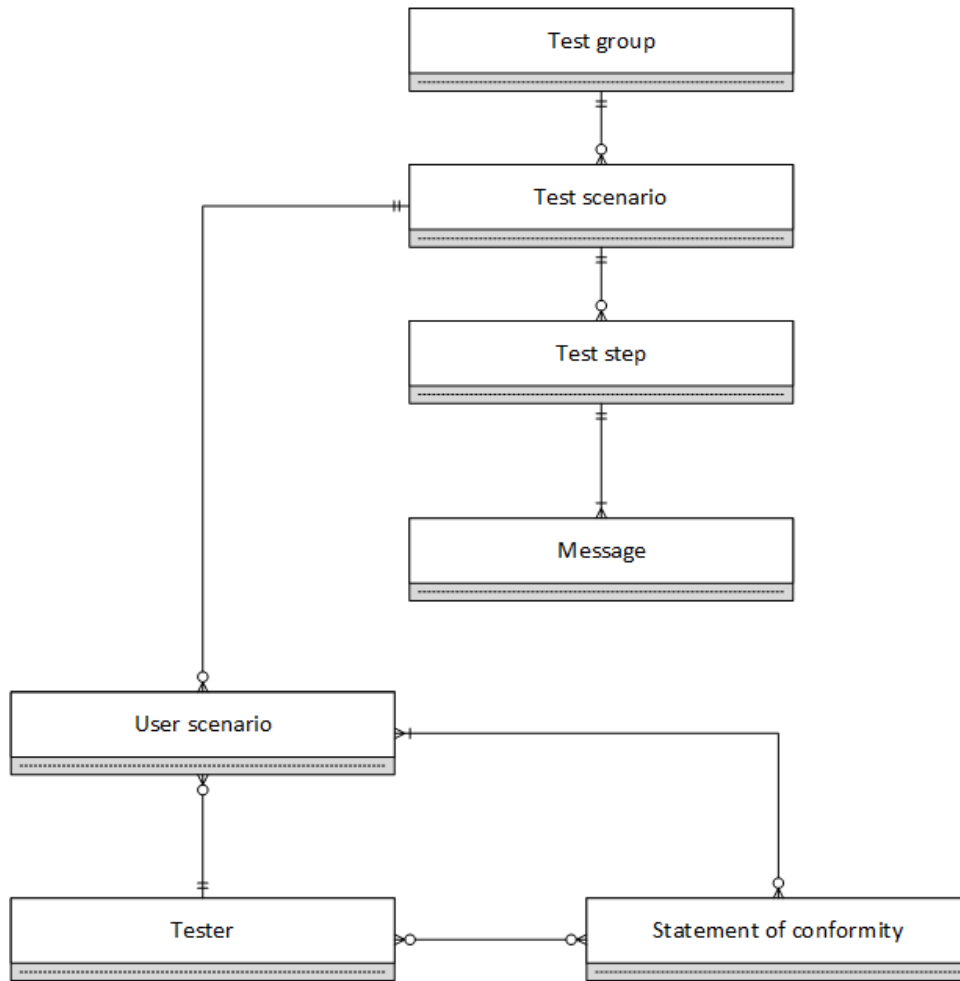
4.1.4.3 Complete



The step is completed, this can be identified by a large green check or red cross left of the list of attempts.

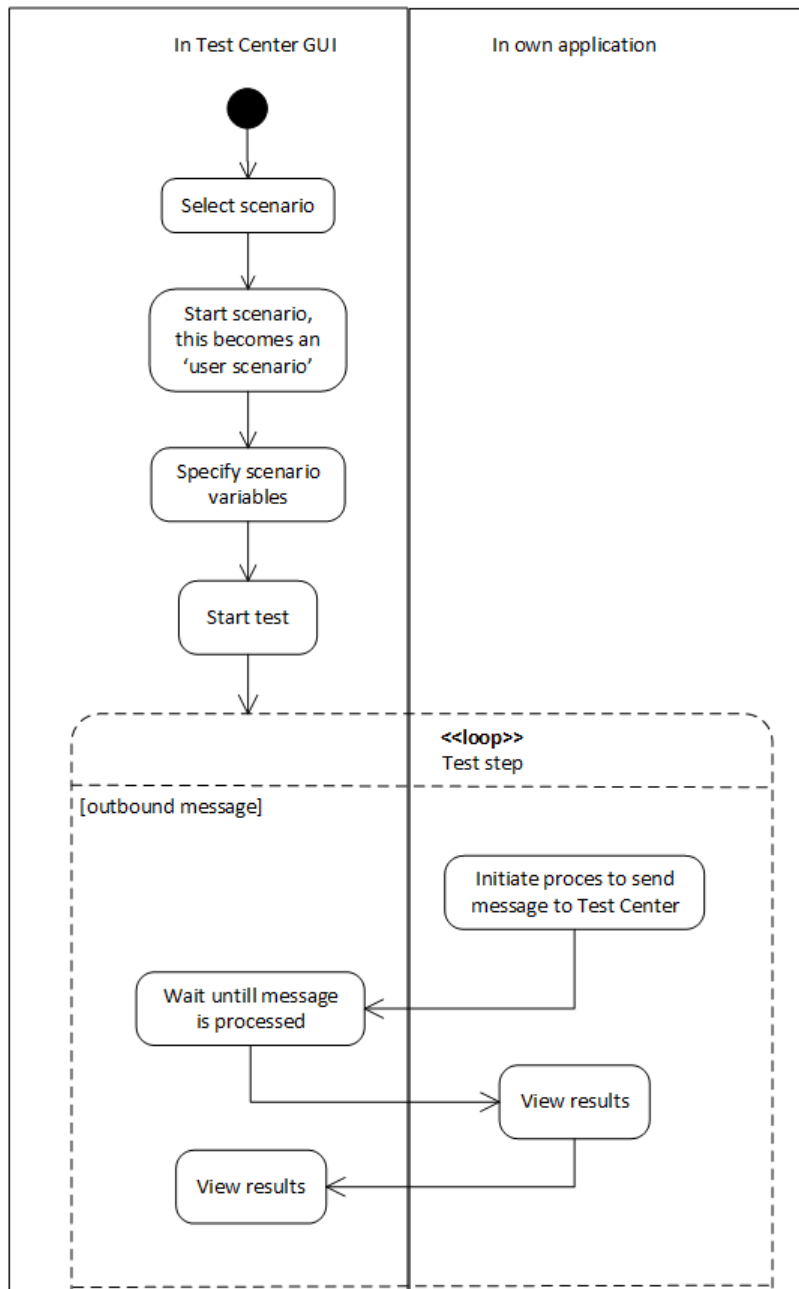
2. The request
Click this 'document' to view the contents of the processed request message.
3. The response
Click this 'document' to view the contents of the processed response message.
4. The test result
Click this icon to view the results. In case of an error the displayed popup will contain important information of the found errors and most likely will help you to improve your application.
5. The test attempts (in this case only 2, within one minute of each other)
It's possible to click any attempt to view the complete history of the specified attempt, including it's inbound and outbound message and the results.

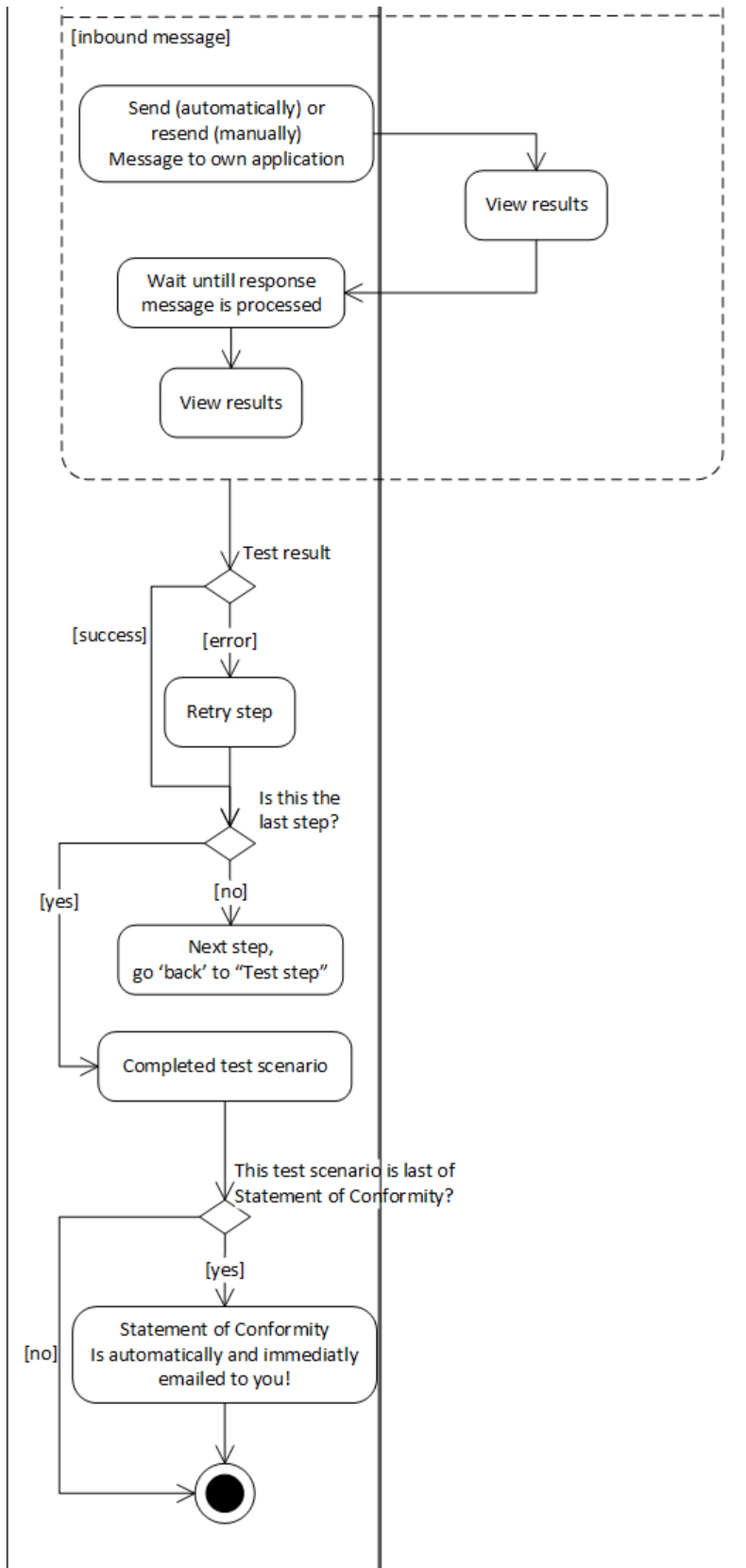
4.2 ER Diagram (functional)



4.3 Activity diagram

4.3.1 Testing





5. Testing your application

Prerequisites:

- logged in as a tester
- your application is ready to send and/or receive messages

Please use the screenshots from paragraph 4.1 to support the following steps. The activity diagram in paragraph 4.3.1 gives an overview of the steps below.

1. Click "Select a Test" in the Navigation pane.
2. Find the test scenario applicable to your application and it's role.
See also: 4.1.2 Select a test scenario.
3. If the application is ready for it, fill in the fields for a Statement of Conformity.
See also: 4.1.2 Select a test scenario.
4. Click the "play" button of the applicable test scenario.
See also: 4.1.2 Select a test scenario.
5. Review the information of the started test scenario.
If applicable, fill in the scenario variables. If left empty, messages can be sent or validated in a strange manner.
Click the button 'Start the test' when ready.
See also: 4.1.3 Start a test scenario.
6. Now depending on the scenario, the choices are:
 - a. The Test Centre immediately sends a message to your application
Please monitor inbound messages in your application and make sure a response is send back.
 - b. The Test Centre waits till it gets its message from your application
Please initiate a process so your application sends a message to the Test Centre.
See also: 4.1.4.1 Start.
7. The Test Centre will process the inbound message, which initiated the test or is a response on the message sent by the Test Centre.
This can take up to a minute before completed!
See also: 4.1.4.2 Executing.
8. After the message is processed, the step is completed.
The test step results can be viewed by clicking on:
 - the large green check
In case everything went okay. Most likely none will click the results because it's not interesting.
 - the large red cross
In case an error occurred. The results will popup, at the bottom all errors will be shown to help pointing down the problem(s).The message sent by your application and by the Test Centre can be viewed by clicking on the 'documents' on the timeline of the step.
If you've passed the test successfully, proceed.
If you were unsuccessfully, please retry! Click the button 'resend message' in the step, or resend a message from your application.
See also: 4.1.4.3 Complete.
9. You've completed a step.
If the scenario has more steps, go back to step 6. for the following step in the scenario.
Else you've finished the scenario now.
10. The test scenario is finished.
After finishing the scenario, the attempts per step can be reviewed by clicking on each of the attempts on the right of each step. The messages and results per step can be reviewed accordingly to the attempt.

11. If this scenario belongs to a set of scenarios for a Statement of Conformity, and the following is true:
- a. you've checked the box to start testing for a Statement of Conformity
 - b. this was the last scenario of the Statement of Conformity scenarios
 - c. all scenarios for the Statement of Conformity are successfully passed

Then a Statement of Conformity is automatically send to you via e-mail !

6. Review previous tests

Through the navigation pane you can review tests made in the past. Please click on “My Tests” in the navigation pane.

A list of all started tests will be shown, click on the magnifier in the right column to view/go to the test.

You can then view each of the test attempts and the corresponding sent and received messages.

Please also look at the GUI in paragraph *4.1.4.3 Complete*.

7. Request support

When stuck on a test scenario and you’re not able to solve the listed errors, you can always get in touch with us. Please email your question and the url (the visible url in your webbrowser) of the running test scenario to us and we will help as soon as possible.